

The two hand safety valve generates an output signal only if two synchronised pneumatic input signals are received. If one input signal is interrupted, the output signal is interrupted as well. The most common application involves connecting a manual button-controlled valve to each of the inputs and using the output signal as a start-of-cycle control for a pneumatically-operated machine.

- The two hand safety valve can be secured with through screws or a DIN bar adaptor.
- The complete pushbutton panel includes the dual manual control valve, two manual pushbuttons, and an emergency stop valve, all housed in a metal box to be mounted on a wall or stand.
- The pushbutton housing is supplied on request for anyone wishing to get a personalised pneumatic connection or drill holes to secure the unit.



SK-85



SV-85

### TECHNICAL DATA

Compressed air couplings	mm
Fluid	
Version	
Standard	
Synchronisation, max. time between two signals	s
De-activation time, with pipe L = max 1000 mm	s
Actuation	
Reset	
Operating pressure	bar
Temperature range	°C
Nominal diameter	mm
Flow rate at 6 bar (0.6 Mpa - 87 psi) ΔP 1 bar (0.1MPa -1.45 psi)	Nl/min
Mounting position	
Compatibility with oils	

Push-in fitting for Ø 4 pipe  
 Filtered, unlubricated compressed air, max 50 µm  
 Single-control – Complete pushbutton panel

- EN574 type IIIA, TÜV approved according to 2006/42/EC  
 Certified TÜV-A-MHF/MG/13-05260 (Art. No. SV-85)
- Certified Bureau Veritas CV 003-12-2011 (Art. No. SK-85)

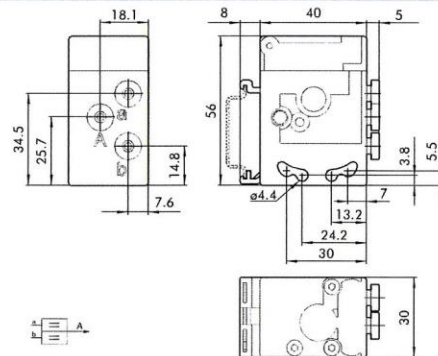
0.4  
 < 0.05  
 pneumatic  
 spring operated  
 2.5 to 8  
 - 10 to +60  
 2.7  
 85  
 In any direction

### TWO HAND SAFETY VALVE

Art. No.	Description	Ident No.
SV-85	Two hand safety valve	106712

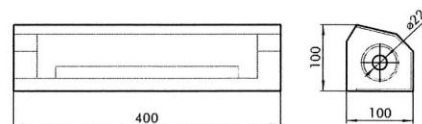
#### Materials

Body: technopolymer  
 Internal parts: brass and technopolymer  
 Gaskets: NBR  
 Spring: alloy steel

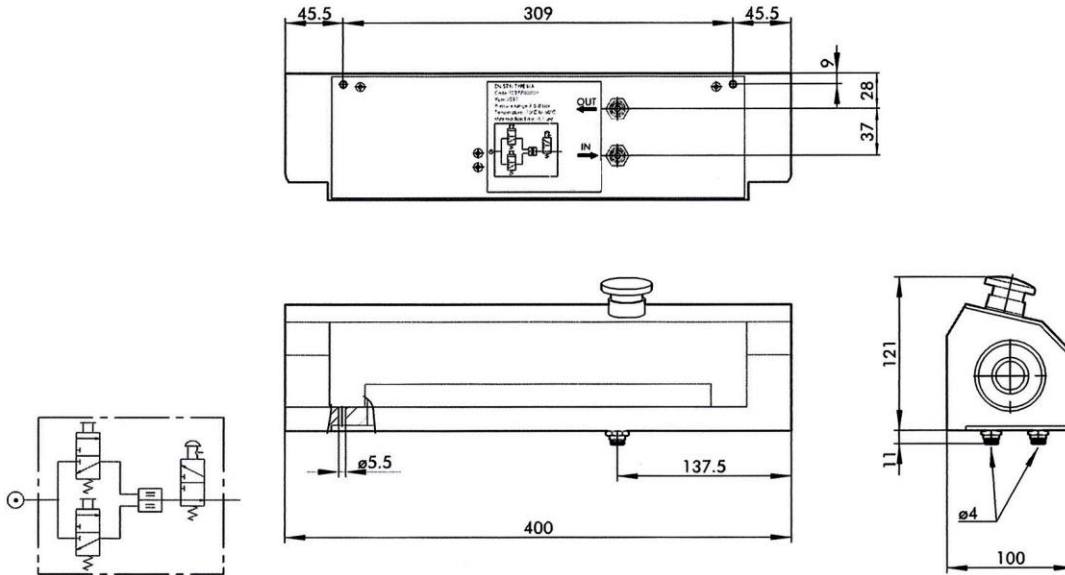


### PUSHBUTTON HOUSING

**Description**  
 Pushbutton housing



**COMPLETE PUSHBUTTON PANEL**



Art. No.	Description	Ident No.
SK-85	Complete pushbutton panel	106711

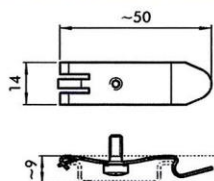
**Materials**  
 Pressure die-cast and painted aluminium alloy

**MAIN COMPONENTS**

Description	Quantity
Dual manual safety valve	1
Monostable protected button - black disk	2
Emergency stop button	1
VME1-01 NC Ø 4	2
VME2-01 NO Ø 4	1
Valve-button connecting base	3
RL10 Ø 4	2

**ACCESSORIES**

**CONNECTION BRACKETS ON THE BAR (DIN EN50022)**



Art. No.	Description	Ident No.
SV-A	Connection brackets on DIN bar	106713

Individually packed

**Summary Art. No.:**

Art. No.	Ident No.
SK-85	106711
SV-85	106712
SV-A	106713